

Fill4Sure™ Filling Needles



Fill4Sure™ Filling Needles provide a needle for every drug product application or filling machine. An offering of both ready-made and tailor-made needles provides 100% coverage across the fill-finish arena, uncoupling the restrictions posed by OEM needles. Fill4Sure™ Filling Needles are made from premium 316L stainless steel with polycarbonate housings in an oil- and adhesive-free manufacturing process. Filling speed, precision and accuracy are at the heart of the design process.

- Repeatable performance and affordability in a single-use format
- Oil- and Adhesive-free manufacturing
- Standard and Custom needle designs
- Premium healthcare grade construction materials
- Co-axial filling needle available for gas-overlay filling of oxygen sensitive drug products
- Filling Needle ID range from 0.8mm to 8.0mm

Features	Benefits
Single-use, ready to use	<ul style="list-style-type: none"> · Open, sterilize and fill · Increase productivity through decreases in set-up times
Made-to-fit	<ul style="list-style-type: none"> · Needles designed for compatible fit not proprietary fit · Needles available for any filling machine configuration with full customization available
Repeatable Performance	<ul style="list-style-type: none"> · Consistent Performance: Confidence in product uniformity across batches is achieved by conducting meticulous quality control checks, ensuring needle equivalence with each production run · Material lot qualification for consecutive construction standards
Needle Straightness	<ul style="list-style-type: none"> · Needle straightness of < 2mm/M for high-speed filling
Premium Construction Materials	<ul style="list-style-type: none"> · ISO9626 lot verified 316L stainless steel Materials · USP Class VI, healthcare grade polymer machine housings certified to 21CFR177.1580 · Latex-, phthalate-, RoHS- and REACH-free materials
Oil- and Adhesive- free Construction	<ul style="list-style-type: none"> · Minimize introduction of foreign particles into the filling environment · No additional cleaning required, further minimize set-up time and quality control procedures

Fill4Sure™ Filling Needles

Materials

- Needle Tubing: 316L stainless steel – ISO 9626 lot certified
- Needle Housing: USP Class VI healthcare grade polycarbonate – certified to 21CFR177.1580
- REACH, RoHS, phthalate and latex free

Packaging

- 70% IPA cleaned in a HEPA-filtered Class 7 environment prior to double-bagging

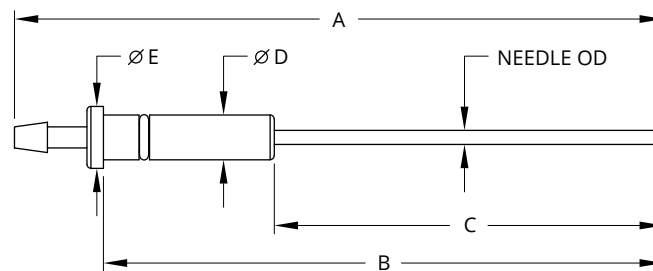
Sterilization

- Autoclave
- Gamma radiation compatible (@50kGys)

Applications

- Final-fill automated filling for drug products, cell and gene therapy and formulations
- Benchtop filling applications for clinical trial sized production
- Gas-overlaying for oxygen-sensitive drug products

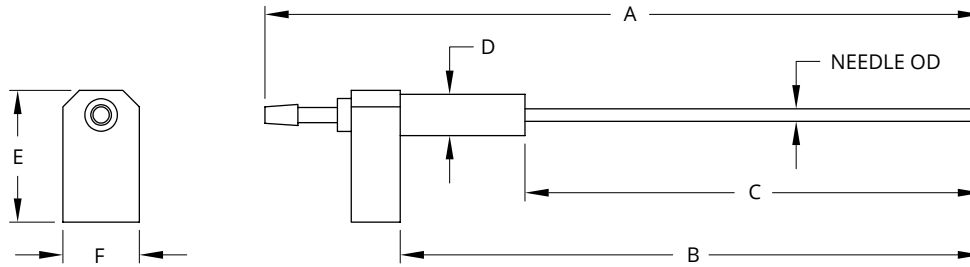
Cytiva Allegro Style Needle Dimensions



Part Number	Needle ID		Needle OD		For Dose Tube ID		A	B	C	D	E
	(mm)	(inch)	(mm)	(inch)	(mm)	(inch)					
4196-520-080	0.80	0.031	1.40	0.055	1.2	3/64					
4196-520-120	1.20	0.047	2.00	0.079	1.6	1/16					
4196-520-160	1.60	0.063	1.90	0.075	2.4	3/32	125	107.6	75	8.6	12
4196-520-240	2.40	0.094	2.70	0.106	3.2	1/8	4.93	4.250	2.95	0.340	0.47
4196-520-310	3.10	0.122	3.50	0.138	3.2	1/8					
4196-520-400	4.00	0.157	4.50	0.177	4.8	3/16					
4196-520B-310	3.10	0.122	3.50	0.138	3.2	1/8	125	107.6	75	10.9	14
4196-520B-400	4.00	0.157	4.50	0.177	4.8	3/16	/	/	/	/	/
4196-520B-500	5.00	0.197	5.45	0.215	6.4	1/4	4.93	4.250	2.95	0.43	0.55

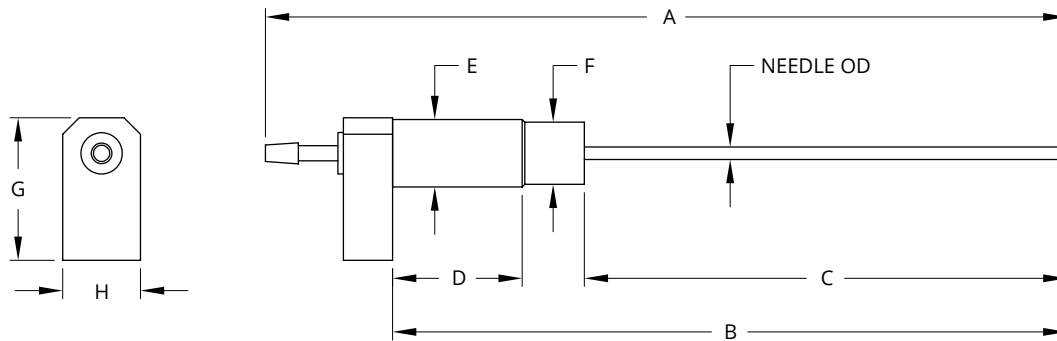
Fill4Sure™ Filling Needles

Optima (INOVA) Style Needle (Small Hub) Dimensions



Part Number	Needle ID		Needle OD		For Dose Tube ID		A	B	C	D	E	F
	(mm)	(inch)	(mm)	(inch)	(mm)	(inch)						
4196-510-080	0.80	0.031	1.40	0.055	1.2	3/64						
4196-510-110	1.10	0.043	1.80	0.071	1.6	1/16						
4196-510-120	1.20	0.047	2.00	0.079	1.6	1/16						
4196-510-150	1.50	0.059	1.75	0.069	2.4	3/32	138.2	112.0	88.0	8.0	25.4	14.7
4196-510-210	2.10	0.083	2.40	0.094	2.4	3/32	/	/	/	/	/	/
4196-510-250	2.50	0.098	3.00	0.118	3.2	1/8	5.44	4.413	3.46	0.314	1.00	0.58
4196-510-300	3.00	0.118	3.50	0.138	3.2	1/8						
4196-510-350	3.50	0.138	4.00	0.157	4.8	3/16						
4196-510-400	4.00	0.157	4.50	0.177	4.8	3/16						

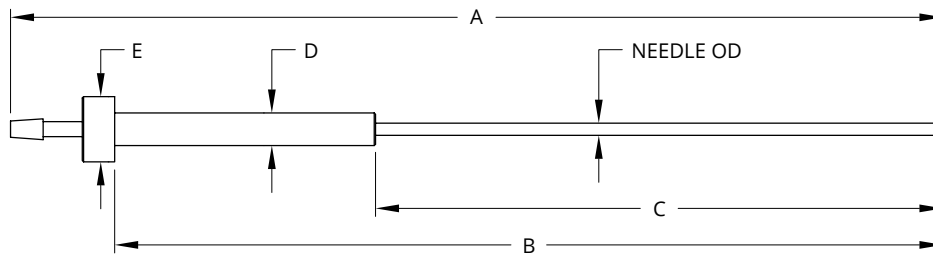
Optima (INOVA) Style Needle (Large Hub) Dimensions



Part Number	Needle ID		Needle OD		For Dose Tube ID		A	B	C	D	E	F	G	H
	(mm)	(inch)	(mm)	(inch)	(mm)	(inch)								
4196-515-080	0.80	0.031	1.40	0.055	1.2	3/64								
4196-515-110	1.10	0.043	1.80	0.071	1.6	1/16								
4196-515-150	1.50	0.059	1.75	0.069	1.6	1/16								
4196-515-210	2.10	0.083	2.40	0.094	2.4	3/32								
4196-515-250	2.50	0.098	3.00	0.118	3.2	1/8	154.5	130.0	93.0	25.0	13.0	12.0	27.5	15.0
4196-515-300	3.00	0.118	3.50	0.138	3.2	1/8	/	/	/	/	/	/	/	/
4196-515-350	3.50	0.138	4.00	0.157	4.8	3/16	6.08	5.118	3.66	0.98	0.512	0.47	1.08	0.59
4196-515-360	3.60	0.142	4.10	0.161	4.8	3/16								
4196-515-480	4.80	0.189	5.05	0.199	4.8	3/16								
4196-515-600	6.00	0.236	6.50	0.256	6.4	1/4								

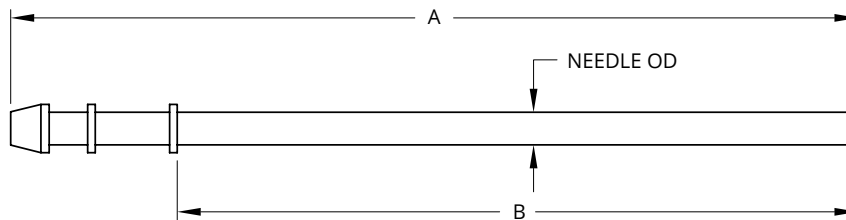
Fill4Sure™ Filling Needles

Syntegon (Bosch) Style Needle Dimensions



Part Number	Needle ID		Needle OD		For Dose Tube ID		A	B	C	D	E
	(mm)	(inch)	(mm)	(inch)	(mm)	(inch)					
4196-524-080	0.80	0.031	1.40	0.055	1.2	3/64					
4196-524-120	1.20	0.047	2.00	0.079	1.6	1/16					
4196-524-160	1.60	0.063	1.90	0.075	1.6	1/16					
4196-524-210	2.10	0.083	2.40	0.094	2.4	3/32	181.6	161.3	110.5	6.35	12.7
4196-524-300	3.00	0.118	3.50	0.138	3.2	1/8	7.15	6.350	4.35	0.250	0.50
4196-524-360	3.60	0.142	4.10	0.161	4.8	3/16					
4196-524-450	4.50	0.177	5.00	0.197	4.8	3/16					
4196-524-500	5.00	0.197	5.45	0.215	6.4	1/4					

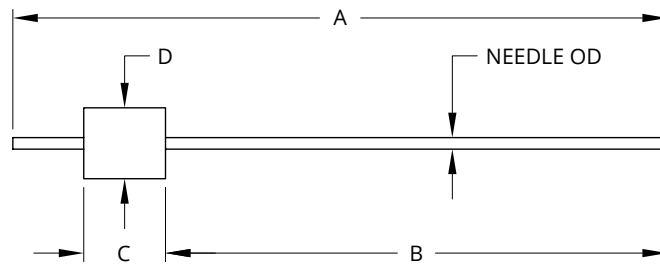
Groninger Style Needle Dimensions



Part Number	Needle ID		Needle OD		For Dose Tube ID		A	B
	(mm)	(inch)	(mm)	(inch)	(mm)	(inch)		
4196-526-160	1.60	0.063	1.99	0.078	1.6	1/16		
4196-526-210	2.10	0.083	2.40	0.094	2.4	3/32	165.0	133.0
4196-526-300	3.00	0.118	4.00	0.157	3.2	1/8	6.5	5.24
4196-526-500	5.00	0.197	6.00	0.236	6.4	1/4		

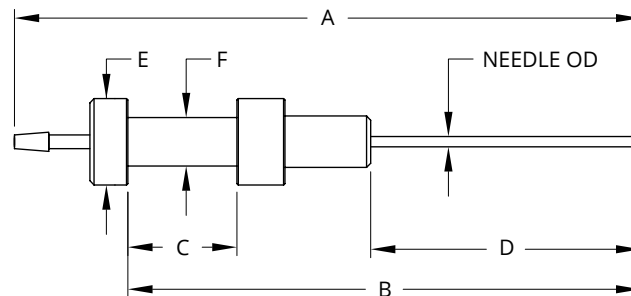
Fill4Sure™ Filling Needles

Flexicon Style Needle Dimensions



Part Number	Needle ID		Needle OD		For Dose Tube ID		A	B	C	D
	(mm)	(inch)	(mm)	(inch)	(mm)	(inch)				
4196-545-060	0.60	0.024	1.00	0.039	0.80	1/32				
4196-545-100	1.00	0.039	1.50	0.059	1.20	3/64				
4196-545-160	1.60	0.063	2.10	0.083	1.60	1/16	120.0	92.0	15.0	13.0
4196-545-300	3.00	0.118	3.80	0.150	3.20	1/8	/	/	/	/
4196-545-450	4.50	0.177	5.50	0.217	4.80	3/16	4.72	3.62	0.59	0.51
4196-545-600	6.00	0.236	7.00	0.276	6.40	1/4				

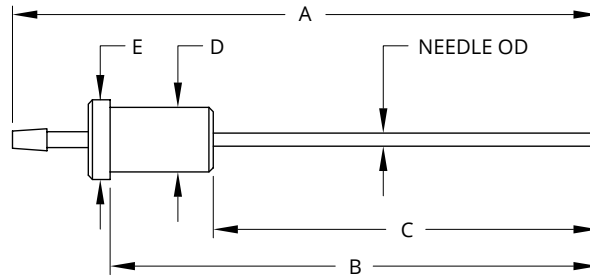
IMA Style Needle Dimensions



Part Number	Needle ID		Needle OD		For Dose Tube ID		A	B	C	D	E	F
	(mm)	(inch)	(mm)	(inch)	(mm)	(inch)						
4196-570-081	0.81	0.032	1.27	0.050	1.20	3/64						
4196-570-100	1.00	0.039	1.40	0.055	1.20	3/64						
4196-570-150	1.50	0.059	1.90	0.075	1.60	1/16	116.0	95.0	20.2	50.0	8.9	16.0
4196-570-300	3.00	0.118	3.50	0.138	3.20	1/8	/	/	/	/	/	/
4196-570-400	4.00	0.157	5.00	0.197	4.80	3/16	4.56	3.740	0.795	1.97	0.354	0.63
4196-570-500	5.00	0.197	6.00	0.236	6.40	1/4						

Fill4Sure™ Filling Needles

Bausch-Stroebel Style Needle Dimensions



Part Number	Needle ID		Needle OD		For Dose Tube ID		A	B	C	D	E
	(mm)	(inch)	(mm)	(inch)	(mm)	(inch)					
4196-610-080	0.80	0.031	1.40	0.055	1.2	3/64					
4196-610-100	1.00	0.039	1.40	0.055	1.6	1/16					
4196-610-160	1.60	0.063	1.99	0.078	1.6	1/16					
4196-610-210	2.10	0.083	2.40	0.094	2.4	3/32	108.0	90.0	71.0	11.9	14.7
4196-610-250	2.50	0.098	2.70	0.106	3.2	1/8	4.25 in	3.543	2.795	0.470	0.578
4196-610-310	3.10	0.122	3.50	0.138	3.2	1/8					
4196-610-400	4.00	0.157	4.50	0.177	4.8	3/16					
4196-610-500	5.00	0.197	5.45	0.215	6.4	1/4					

Americas

1020 Flynn Road
Camarillo, CA 93012
United States

+1-805-920-7264
SalesSupport-US@SaniSure.com

Europe & Asia

ZAE Robert Steichen 16, rue Héierchen
L4940 Bascharage
Grand Duché du Luxembourg

+352-26-33731
SalesSupport-EU@SaniSure.com



SaniSure.com